

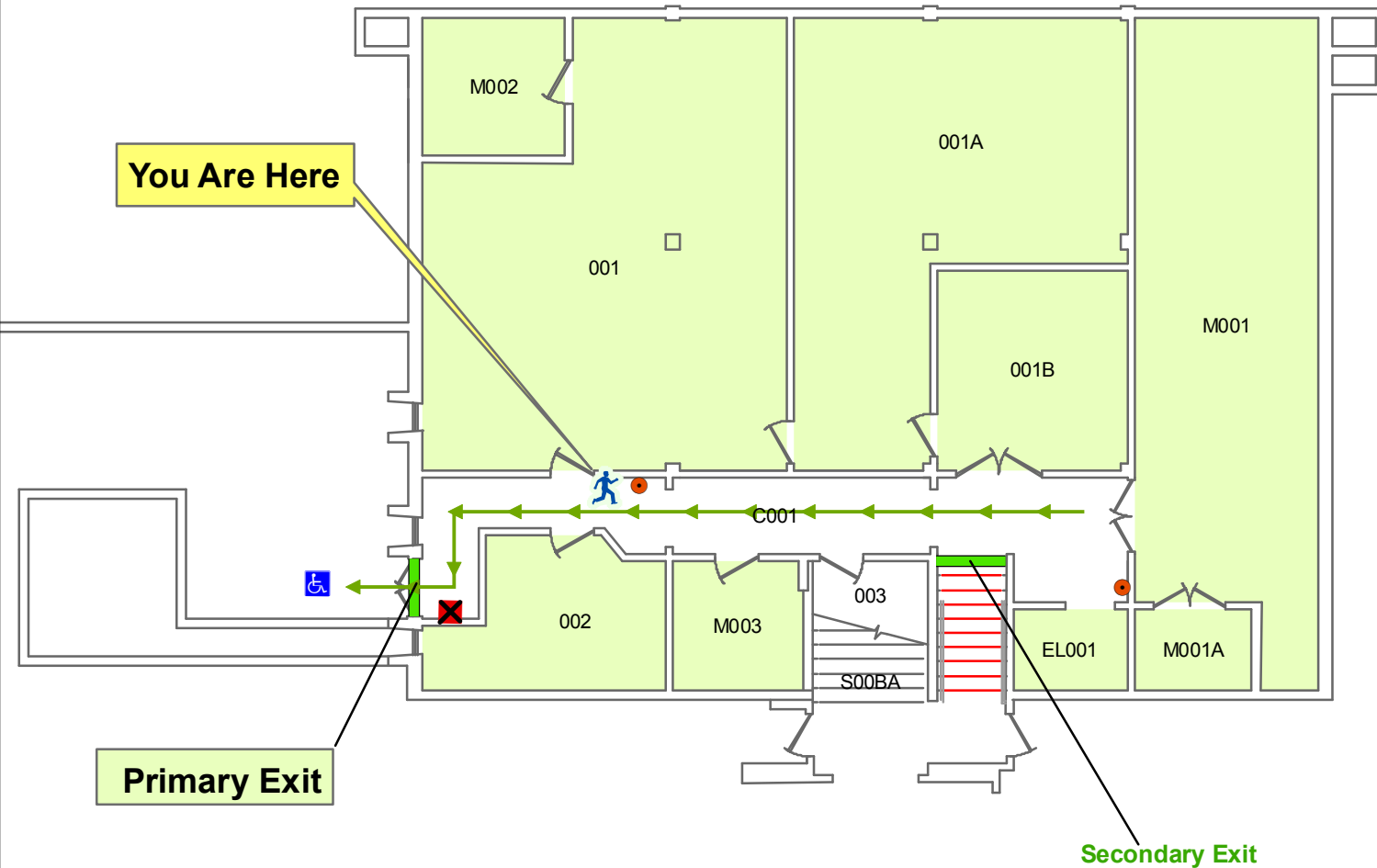
National Judicial College

Basement

Revised 6/25/2009

IN CASE OF FIRE:

1. NOTIFY OTHERS IN AREA (AS YOU ARE LEAVING)
2. WALK TO CLOSEST EXIT
3. EVACUATE BUILDING AND PROCEED TO ASSEMBLY POINT
4. CALL 911 FROM SAFE PLACE
5. DO NOT RETURN TO BUILDING UNTIL ALL CLEAR IS GIVEN
6. USE FIRE EXTINGUISHER AS EGRESS TOOL
7. **PERSONS WITH MOBILITY ISSUES CAN USE THE STAIRS FOR AREA OF REFUGE**



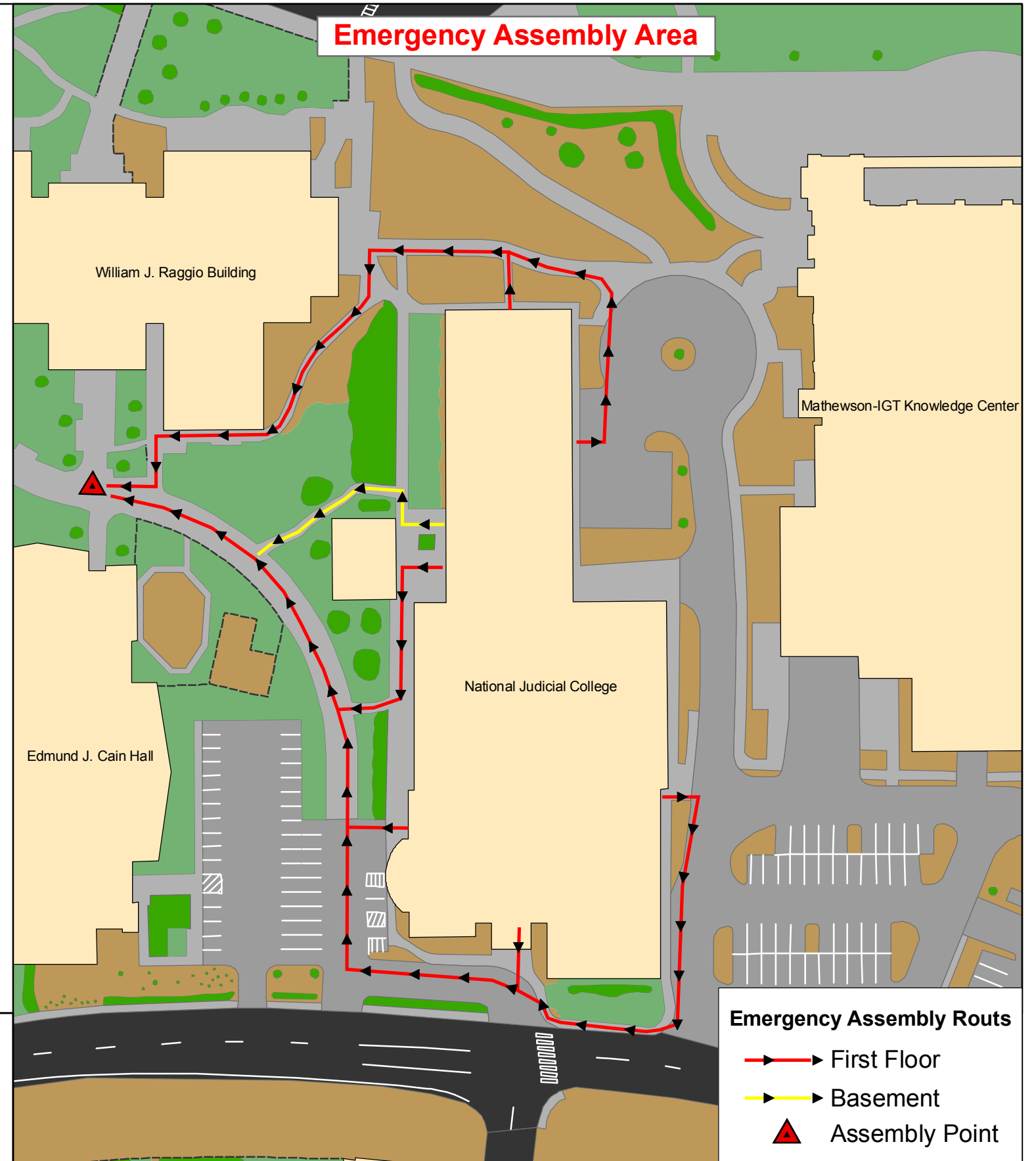
Not for duplication or republication
Request official copies from EH&S 682-6459



- Emergency Exit
- Evacuation Route
- Stairs

Fire Extinguisher

- ABC - Dry Chemical
- Pull Station



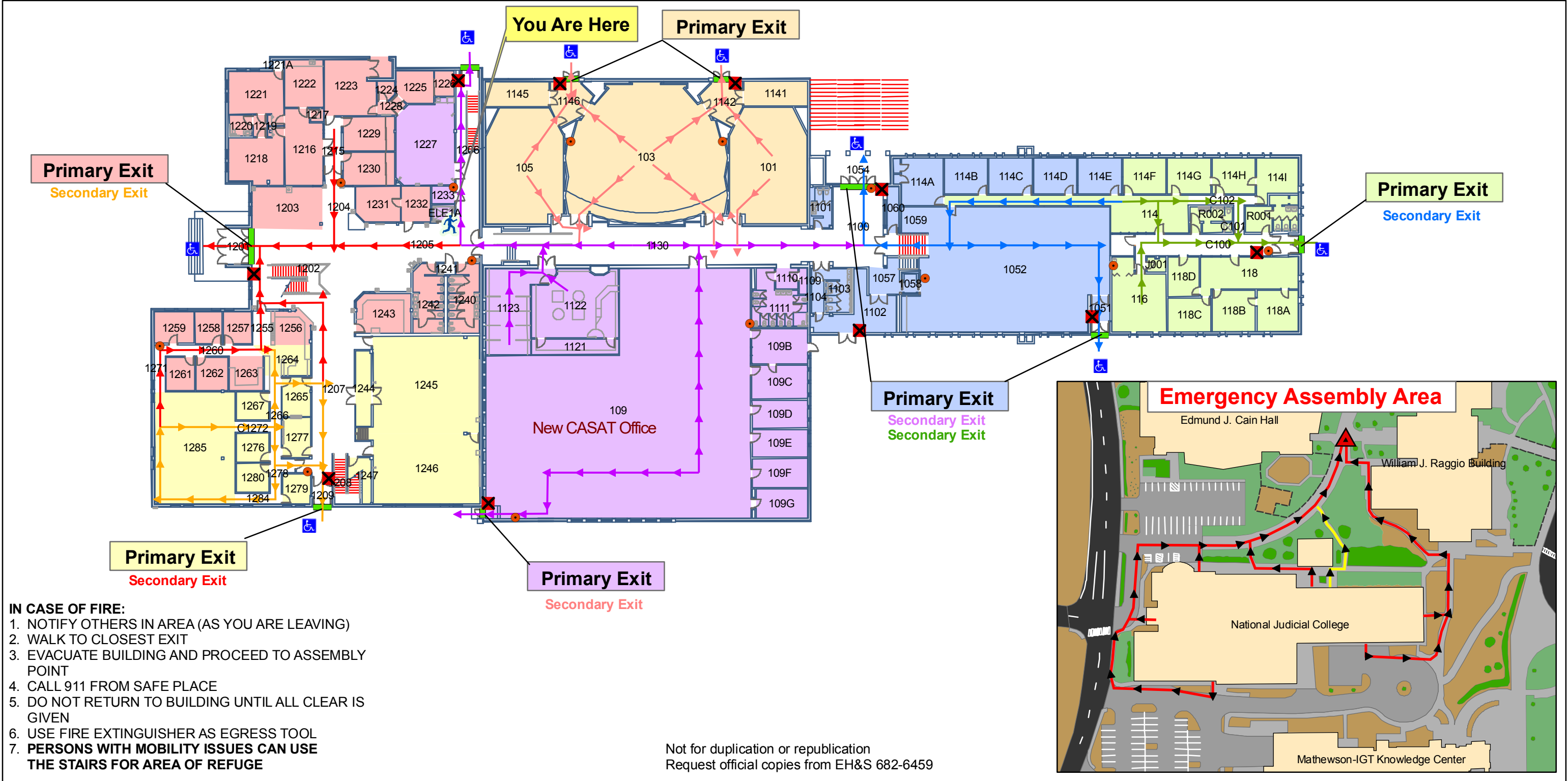
Emergency Assembly Routes

- First Floor
- Basement
- Assembly Point

National Judicial College

First Floor

Revised 6/25/2009



Emergency Exit

Evacuation Route

Stairs

Fire Extinguisher

ABC - Dry Chemical

Pull Station

Emergency Assembly Routes

First Floor

Basement

Assembly Point



National Judicial College

Second Floor

Revised 6/25/2009

